

The universe is immense and it seems to be homogeneous, in a large scale, everywhere we look at.



There's a picture of a galaxy above

Overleaf is a great professional tool to edit online documents, share and backup your \LaTeX projects. Also offers a rather large help documentation.



Overleaf is a great professional tool to edit online documents, share and backup your \LaTeX projects. Also offers a rather large help documentation.



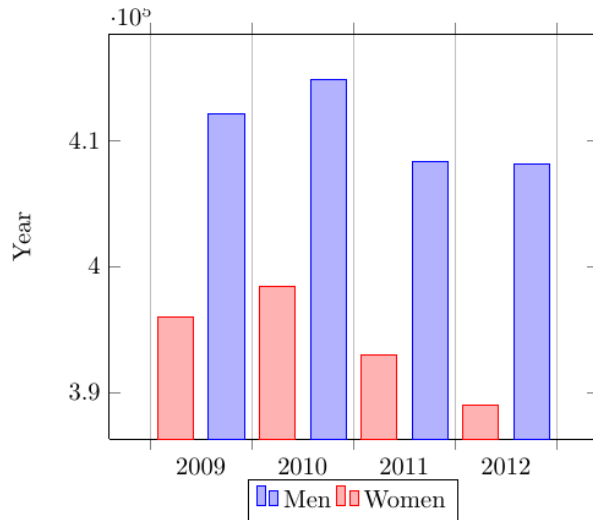
Overleaf is a great professional tool to edit online, share and backup your \LaTeX projects. Also offers a rather large base of help documentation.

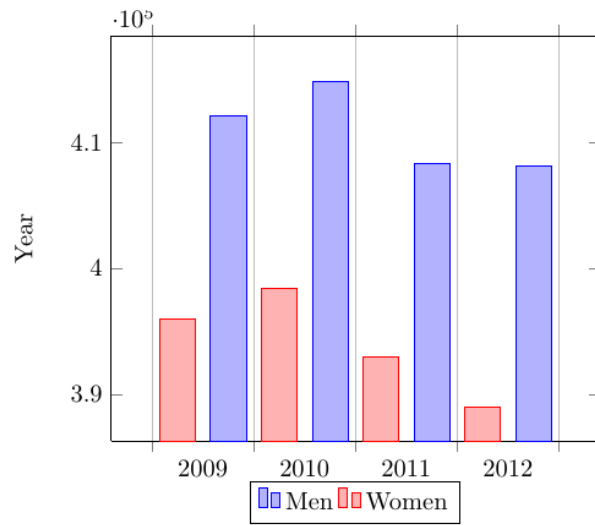


The universe is immense and it seems to be homogeneous, in a large scale, everywhere we look at.



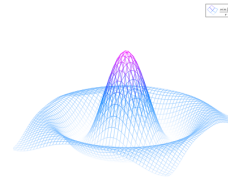
In the next example the figure will be positioned right below this sentence.



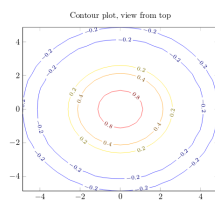


In this picture you can see a bar graph that shows the results of a survey which involved some tricky data studied as time passed.

There are several ways to plot a function of two variables, depending on the information you are interested in. For instance, if you want to see the mesh of a function so it is easier to see the derivative you can use a plot like the one on the left.



On the other side, if you are only interested on certain values you can use the contour plot, you can use the contour plot, you can use the contour plot, you can use the contour plot, you can use the contour plot, like the one on the left.



On the other side, if you are only interested on certain values you can use the contour plot, you can use the contour plot, you can use the contour plot, you can use the contour plot, you can use the contour plot, like the one on the left.

On the other side, if you are only interested on certain values you can use the contour plot, you can use the contour plot, you can use the contour plot, you can use the contour plot, you can use the contour plot, like the one on the left.

Figure 1: Example of a parametric plot $(\sin(x), \cos(x), x)$

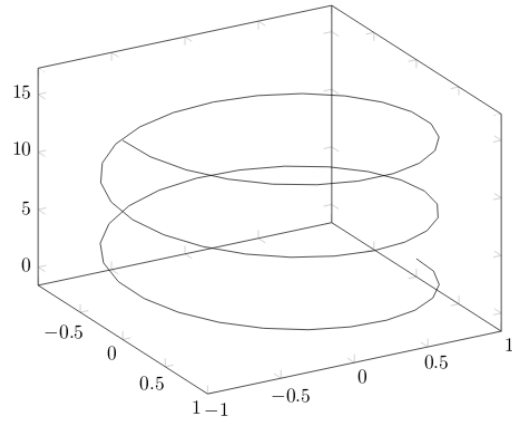


Figure 2: Using again the picture of the universe. This caption will be on the right

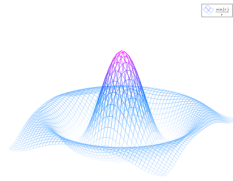


Figure 3: a nice plot

As you can see in the figure 3, the function grows near 0. Also, in the page 7 is the same example.

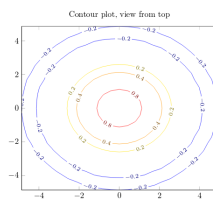


Figure 4: a nice contour plot

List of Figures

1	Example of a parametric plot $(\sin(x), \cos(x), x)$	6
2	Using again the picture of the universe. This caption will be on the right	6
3	a nice plot	7
4	a nice contour plot	7